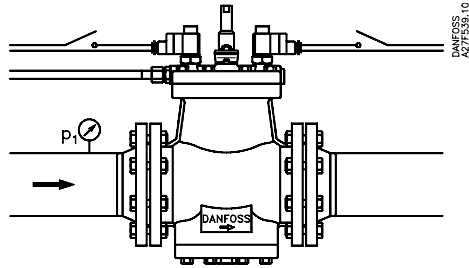
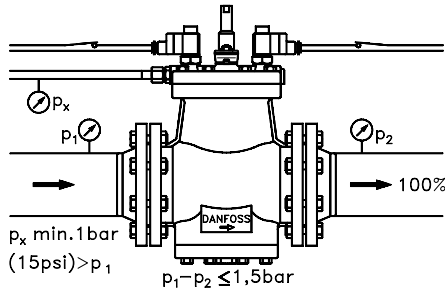
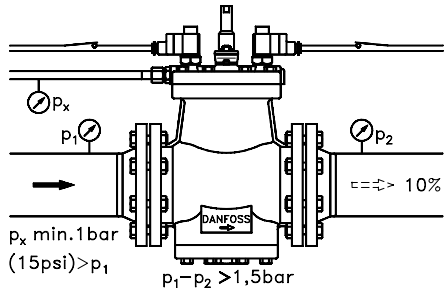


027R9510

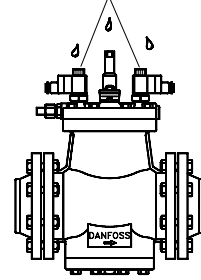
027R9510



DANFOSS  
A27F5381.0

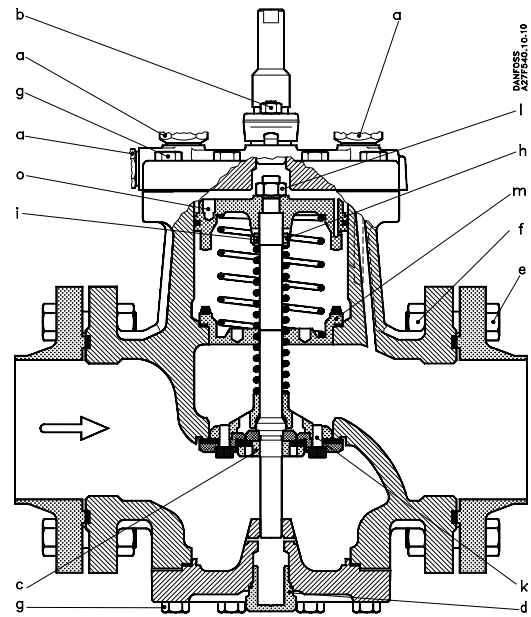


IP 67 (IEC 529/DIN 40050)



DANFOSS  
A27F5381.1

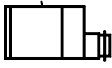
$140 > TB(^{\circ}C) \geq -10 \Rightarrow PB(\text{bar}) = 28$   
 $-10 > TB(^{\circ}C) > -50 \Rightarrow PB(\text{bar}) = 21$



DANFOSS  
A27F540.10.10

| Pos. item | <p>DANFOSS<br/>A600-08.12</p> |            |            | <p>Torque</p> <p>DANFOSS<br/>A27F586.11</p> |          |          |
|-----------|-------------------------------|------------|------------|---|----------|----------|
|           | PMLX 80                       | PMLX 100   | PMLX 125   | PMLX 80                                     | PMLX 100 | PMLX 125 |
| a         |                               | M24 x 1.5  |            |   | 50 Nm    |          |
| b         |                               | M12 x 1.75 |            |   | 25 Nm    |          |
| c         | M22 x 1.5                     | M22 x 1.5  | M26 x 1.5  | 60 Nm                                       | 60 Nm    | 80 Nm    |
| d         |                               | M35 x 1.5  |            |   | 175 Nm   |          |
| e         | M20 x 2.5                     | M20 x 2.5  | M24 x 3    |   |          |          |
| f         | M20 x 2.5                     |            | M24 x 3    | 105 Nm                                      | 135 Nm   | 200 Nm   |
| g         | M14 x 2                       | M14 x 2    | M16 x 2    | 80 Nm                                       | 80 Nm    | 125 Nm   |
| h         |                               | M6 x 1     |            |   |          |          |
| i         |                               | M6 x 1     |            |   | 10 Nm    |          |
| k         | M8 x 1.25                     | M10 x 1.5  | M12 x 1.75 | 25 Nm                                       | 40 Nm    | 60 Nm    |
| l         | M14 x 1.5                     | M16 x 1.5  | M20 x 1.5  | 45 Nm                                       | 60 Nm    | 90 Nm    |
| m         | M100 x 2                      | M120 x 2   | M145 x 2   | 150 Nm                                      | 220 Nm   | 310 Nm   |
| o         | M8 x 1.25                     | M10 x 1.5  | M12 x 1.75 |   |          |          |

1 Nm = 0.1 kpm = 0.74 lbf-ft

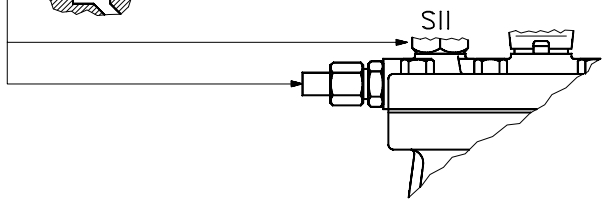
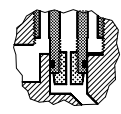
10 / 12 W a.c.  $\begin{matrix} +10 \\ -15\% \end{matrix}$    $\begin{matrix} t_{\min} = -40^{\circ}\text{C} (-40^{\circ}\text{F}) \\ t_{\max} = 80^{\circ}\text{C} (175^{\circ}\text{F}) \end{matrix}$

Max. opening diff. pressure (MOPD) 21 bar (300psig)

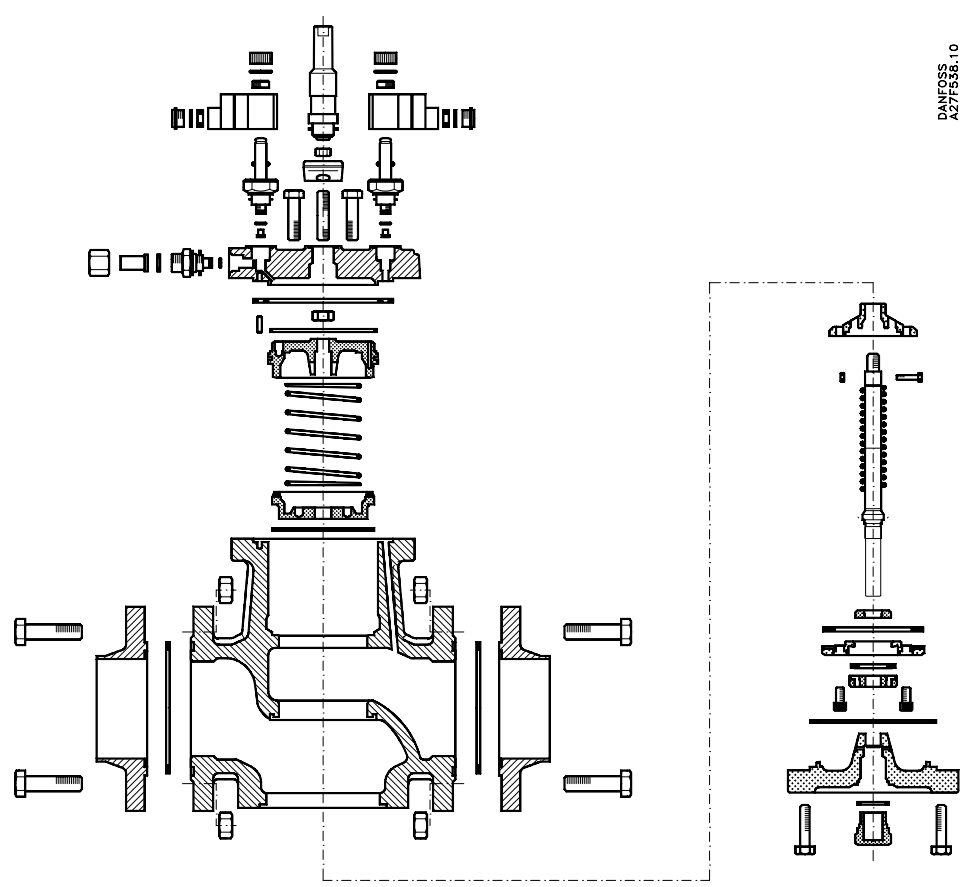
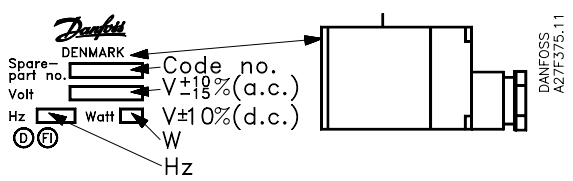
20 W a.c.  $\begin{matrix} +10 \\ -15\% \end{matrix}$    $\begin{matrix} t_{\min} = -40^{\circ}\text{C} (-40^{\circ}\text{F}) \\ t_{\max} = 50^{\circ}\text{C} (120^{\circ}\text{F}) \end{matrix}$

Max. opening diff. pressure (MOPD) 14 bar (200psig)

$p_x > p_1 + 2\text{bar}$



DANFOSS  
A27F538.11



**Reservedele**  
**Spare parts**  
**Ersatzteile**  
**Pièces de rechange:**  
Se katalog RK.0X.G3.02  
See catalogue RK.0X.G3.02  
Siehe Katalog RK.0X.G3.02  
Voir le catalogue RK.0X.G3.02

**Teknisk brochure**  
**Technical leaflet**  
**Technische Broschüre**  
**Fiche technique:**  
Se RC.3F.A1.01  
See RC.3F.A1.02  
Siehe RC.3F.A1.03  
Voir RC.3F.A1.04